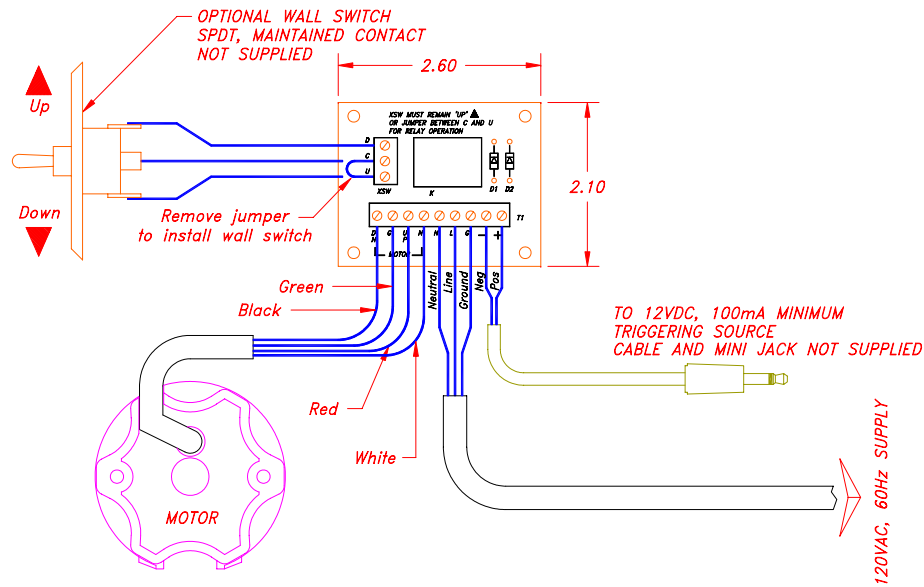


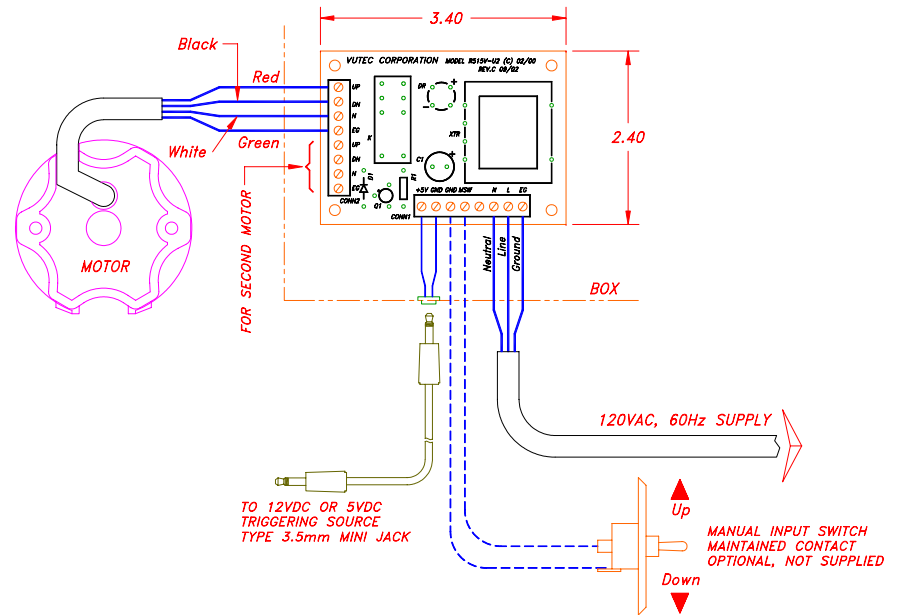
Quote No. _____

TRIGGER CONTROLS

LECTRIC I, II, III & IV



UNIVERSAL 12VDC TRIGGER
MODEL R12V-U



LOW LEVEL SIGNAL TRIGGER
MODEL R515V-U2
FOR 5 TO 15VDC TRIGGER SOURCE
OF 25mA OR LESS
TYPICALLY FROM SONY AND SHARP PROJECTORS

Notes:

- 1 - Wirings shown are to be connected by installers.
- 2 - Wirings must conform to local and/or national electrical codes and regulations.
- 3 - Wirings must be of minimum 18 AWG.

CAD drawing – NOT TO SCALE

Optional Control Specified		
Project No.	Originator	Date
Customer Signature	Special Notes	Date



VUTEC CORPORATION